



VIECI

FROM DAMIETTA TO THE WORLD

DUO COLLECTION 2026

Two Materials. One Statement.

The Duo Collection — Vol. VI —
is built on contrast.

Cream textured upholstery meets
smooth caramel panel arms on
the sofa. The Petal Chair wraps
its sculptural back panels in
a rich dual-material finish,
revealing a second material from
every angle.

Designed to be looked at
from every direction.

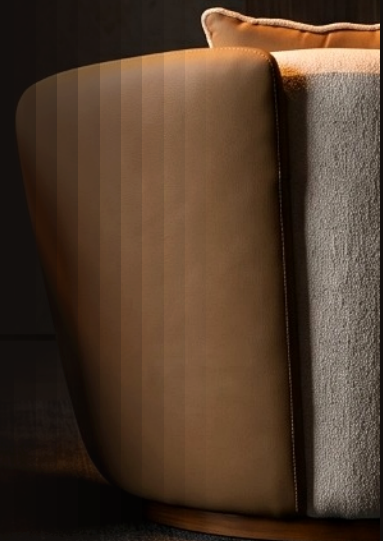
Made in Damietta.
Built for the world.

DUAL MATERIAL

PETAL CHAIR

PANEL ARMS

EXPORT B2B





The Duo Scene

Sofa + Petal Chairs — full collection in deep dark interior

Bronze sculpture styling · dark wood paneling · vieceg.com



Front & Minimal

Clean symmetry · cream seat + caramel leather arm panels

Track spot lighting · dark textured wall · wood accent legs



In Context

Sofa with tropical greenery · dark wood slat backdrop · warm glow

Real showroom photography · dual-material arm detail visible



Back & Front

The chair's petal back panels — sculptural from every angle

Studio floor lamp · dark wood wall · cream + caramel dual finish



Amber Spotlight

Front seat in warm amber light · back showing petal panel detail

Swivel base · available as single unit or pair · B2B pricing on request

VIECI

FROM DAMIETTA TO THE WORLD

DUO COLLECTION · VOL. VI · 2026

WEBSITE

www.vieci.eg

TRADE

B2B · Wholesale · Export Orders

MARKETS

Arab World · Africa · International

ORIGIN

Damietta, Egypt